

# Tmax molded case circuit-breakers

## Tmax T7

### Compliance with Standards

UL489
CSA C22.2 No. 5.1
IEC 60947-2
EC Directive:
- "Low voltage directives" (LVD) no. 73/23 EEC
- "Electromagnetic compatibility directive" (EMC) no. 89/336 EEC



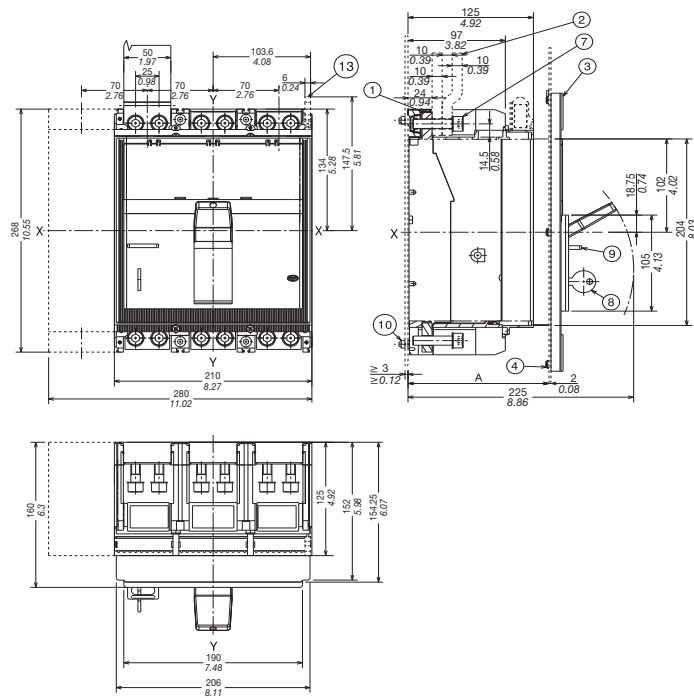
Type of circuit-breaker		Tmax T7		
Frame		1000/1200		
Rated ultimate short-circuit breaking capacity, Icu		S	H	L
(AC) 50-60 Hz 240 V	[kA]	65	100	150
(AC) 50-60 Hz 277 V	[kA]	-	-	-
(AC) 50-60 Hz 347 V	[kA]	-	-	-
(AC) 50-60 Hz 480 V	[kA]	50	65	100
(AC) 50-60 Hz 600V/347 V	[kA]	-	-	-
(AC) 50-60 Hz 600 V	[kA]	25	50	65
(DC) 250 V-2 poles in series	[kA]	-	-	-
(DC) 500 V-2 poles in series	[kA]	-	-	-
(DC) 500 V-3 poles in series	[kA]	-	-	-
(DC) 600 V-3 poles in series	[kA]	-	-	-
<b>Trip units:</b>				
T fixed, M fixed (10xIn) TMF		-		
T adj., M fixed (10xIn) TMD		-		
Thermomagnetic	T adj., M adj. (5...10xIn) TMA	-		
	T adj., M fixed (3xIn) TMG	-		
Magnetic only	T adj., M adj. (2.5...5xIn) TMG	-		
	M adjustable (6...12xIn) MA	-		
Electronic	PR231/P	•		
	PR232/P	•		
	PR331/P	•		
	PR332/P	•		
Versions		F-W		
Terminals	Fixed (F)	F-FC CuAl HR/VR		
	Plug-in (P)	-		
Withdrawable (W)		HR/VR		
Fixing on DIN rail		-		
Mechanical life	[No. operations /hourly oper.]	10000/60		
Electrical life	[No. operations /hourly oper.]	2000/60		
Basic fixed dimensions	3/4 pole	W [mm]	210/280	
		D [mm]	154/154 Manual 178/178 Motorized	
		H [mm]	268/268	
Weights	fixed	3/4 pole	[kg]	9.7/12.5 Manual 11/14 Motorized
	plug-in	3/4 pole	[kg]	-
	Withdrawable	3/4 pole	[kg]	29.7/39.6 Manual 32/42 Motorized



# Tmax molded case circuit-breakers

## Dimensions T7/T7M series

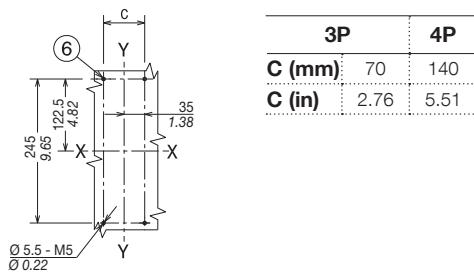
### Overall dimensions T7



- 1 Front terminals for flat connection
- 2 Busbars
- 3 Flange for the compartment door
- 4 Flange fixing screws
- 7 Tightening torque: 18 Nm
- 8 Key lock (optional)
- 9 Padlock (optional)
- 10 Tightening torque: 2.5 Nm
- 13 Terminal for auxiliary contacts

	With flange	Without flange
<b>A (mm)</b>	125...141	147
<b>A (in)</b>	4.92...5.55	5.79

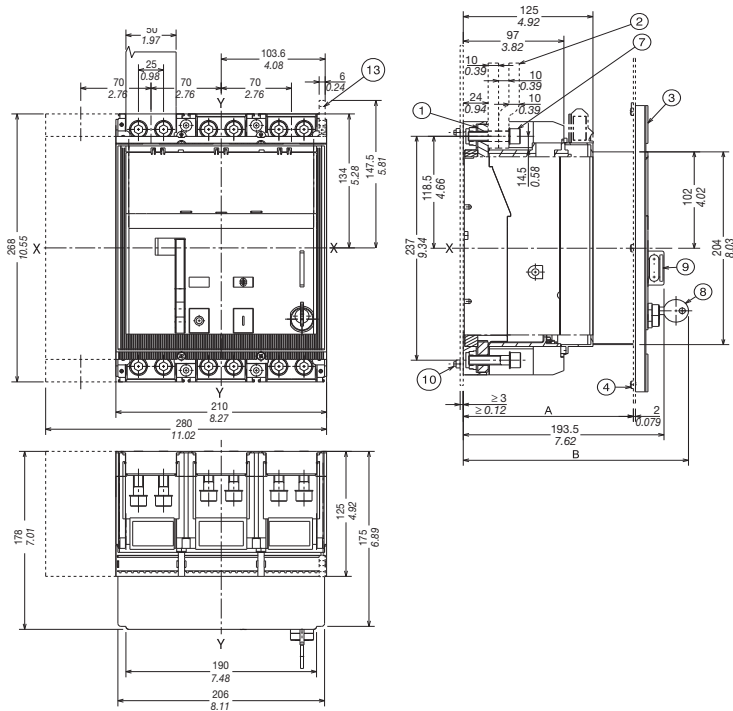
### Drilling template for support sheet



# Tmax molded case circuit-breakers

## Dimensions T7/T7M series

### Overall dimensions T7M

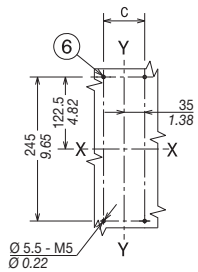


- 1 Front terminals for flat connection
- 2 Busbars
- 3 Flange for the compartment door
- 4 Flange fixing screws
- 7 Tightening torque: 18 Nm
- 8 Key lock (optional)
- 9 Padlock (optional)
- 10 Tightening torque: 2.5 Nm
- 13 Terminal for auxiliary contacts

	With flange	Without flange
<b>A (mm)</b>	125...141	147
<b>A (in)</b>	4.92...5.55	5.79

	Standard	Ronis	Profalux	Kirk	Castell
<b>B (mm)</b>	208	216	224	–	–
<b>B (in)</b>	8.19	8.5	8.82	–	–

### Drilling template for support sheet



	3P	4P
<b>C (mm)</b>	70	140
<b>C (in)</b>	2.76	5.51

# Contact us

## Canada

**ABB Inc.**

**Low Voltage Products**

**2117 – 32nd Avenue**

**Lachine, QC, CANADA H8T 3J1**

**Tel.: 514-420-3100**

**Fax: 514-420-3137**

**Toll Free: 1-800-567-0283**

[www.abb.ca](http://www.abb.ca)

While all care has been taken to ensure that the information contained in this publication is correct, no responsibility can be accepted for any inaccuracy. The Company reserves the right to alter or modify the information contained herein at any time in the light of technical or other developments. Technical specifications are valid under normal operating conditions only. The Company does not accept any responsibility for any misuse of the product and cannot be held liable for indirect or consequential damages.

© Copyright 2011 ABB Inc. All rights reserved.

